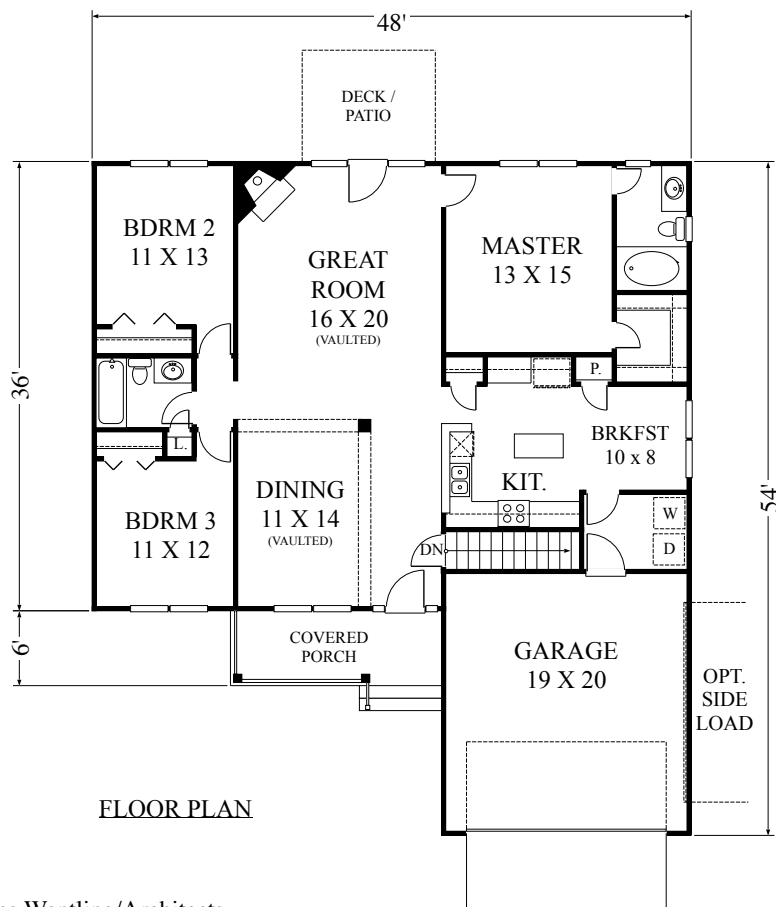


SMALL SINGLE



Copyright 2009 by James Wentling/Architects

3-06 THE DONLAN 1,669 SQ FT

This efficient three bedroom ranch offers an open plan for comfortable living. The master bedroom is separated from the secondary bedrooms by the spacious great room and dining areas. The kitchen is conveniently located off the garage and includes a large and sunny breakfast area. The front elevation features a spacious entry proch. This plan is documented with a basement foundation.

PRICE B

JAMES WENTLING / ARCHITECTS

PRICE B

Plan Library Service